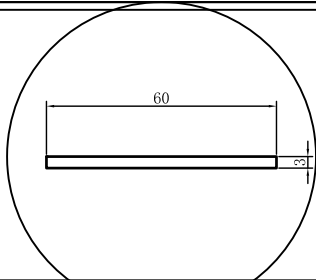
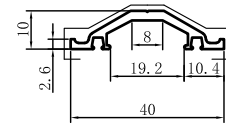




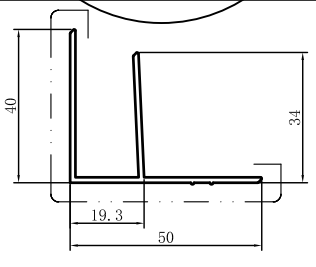
Code	SX-WM3045
Name	
Thickness	3.0mm
MASS	0.490kg/m



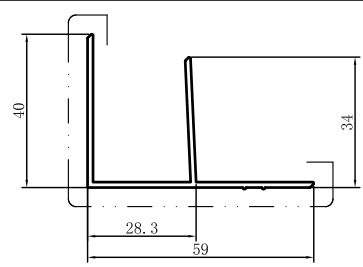
Code	SX-WM3046
Name	
Thickness	2.6mm
MASS	0.296kg/m



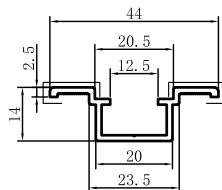
Code	SX-WM3047
Name	
Thickness	1.5mm
MASS	0.482kg/m



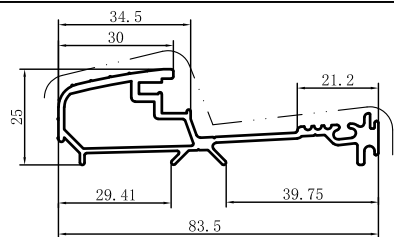
Code	SX-WM3048
Name	
Thickness	1.5mm
MASS	0.519kg/m



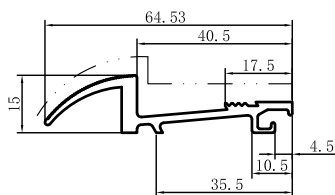
Code	SX-WM3049
Name	
Thickness	1.6mm
MASS	0.330kg/m



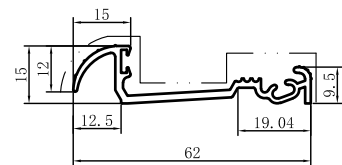
Code	SX-WM3050
Name	
Thickness	1.6mm
MASS	0.944kg/m



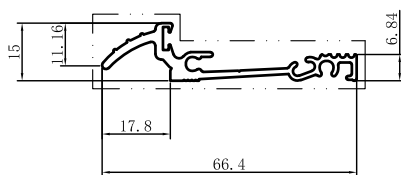
Code	SX-WM3051
Name	
Thickness	2.1mm
MASS	0.611kg/m



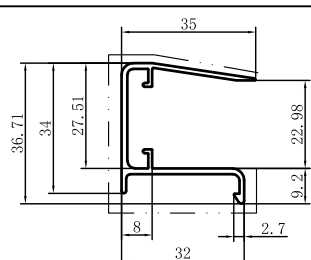
Code	SX-WM3052
Name	
Thickness	2.1mm
MASS	0.500kg/m



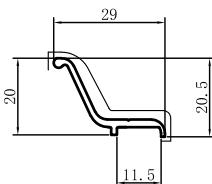
Code	SX-WM3053
Name	
Thickness	1.7mm
MASS	0.572kg/m



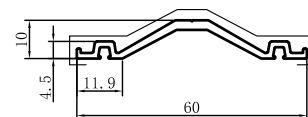
Code	SX-WM3054
Name	
Thickness	1.6mm
MASS	0.450kg/m



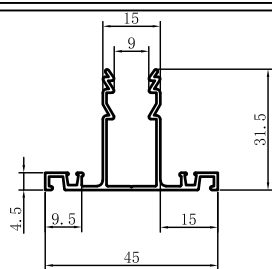
Code	SX-WM2528
Name	
Thickness	1.6mm
MASS	0.203kg/m



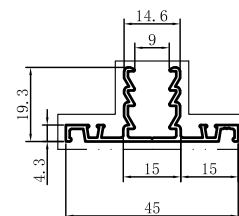
Code	SX-WM2529
Name	
Thickness	1.6mm
MASS	0.404kg/m



Code	SX-WM2530
Name	
Thickness	1.1mm
MASS	0.415kg/m



Code	SX-WM2531
Name	
Thickness	1.1mm
MASS	0.336kg/m





Code	SX-WM3329		Code	SX-WM3330	
Name			Name		
Thickness	2.1mm		Thickness	1.7mm	
MASS	0.301kg/m		MASS	0.363kg/m	
Code	SX-WM3389		Code	SX-WM3339	
Name			Name		
Thickness	2.1mm		Thickness	1.3mm	
MASS	0.275kg/m		MASS	0.230kg/m	
Code	SX-WM3812		Code	SX-WM3914	
Name			Name		
Thickness	1.7mm		Thickness	1.7mm	
MASS	0.383kg/m		MASS	0.584kg/m	
Code	SX-WM3366		Code	SX-WM4148	
Name			Name		
Thickness	1.6mm		Thickness	1.7mm	
MASS	0.548kg/m		MASS	0.385kg/m	
Code	SX-WM4141		Code	SX-WM4442	
Name			Name		
Thickness	1.5mm		Thickness	1.35mm	
MASS	0.457kg/m		MASS	0.134kg/m	
Code	SX-WM3338		Code	SX-WM3348	
Name			Name		
Thickness	1.3mm		Thickness	1.4mm	
MASS	0.279kg/m		MASS	0.301kg/m	
Code	SX-WM4050		Code	SX-WM4261	
Name			Name		
Thickness	1.3mm		Thickness	1.1mm	
MASS	0.228kg/m		MASS	0.345kg/m	